












<i>Neumi monosonici:</i>		
pùñctum quadràtum 	pùñctum caudàtum  (<i>mai</i> )	pùñctum inclinàtum 
<i>Neumi plurisonici:</i>		
2 note		3 note
pes 	<i>si legge</i> 2  1	clivis 
climacus 	tòrculus 	porrèctus 
		<i>si legge</i> 1  2 3

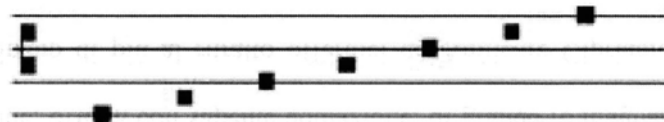
Le chiavi



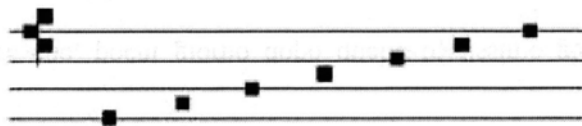
Chiave di *do*

Chiave di *fa*

Le chiavi di lettura delle note sono due: quella di DO e quella di FA, raffigurate con una stilizzazione grafica delle lettere C ed F, secondo l'antico uso di indicare le note. La posizione delle chiavi sul tetragramma non è fissa. La chiave di DO la si può trovare raramente sulla seconda linea, indifferentemente sulla terza o sulla quarta, mai sulla prima. La chiave di FA la si trova sulla terza linea, una volta sulla quarta, nell'*offertorio Veritas mea*, mai sulla prima e sulla seconda.



fa sol la si do re mi




sol la si do re mi fa

XI

IN DOMINICIS PER ANNUM

(Orbis factor)


A

I  X. s.

K Y-ri e * e- lé- i-son. bis Chri-ste

e- lé- i-son. bis Ky-ri e e- lé- i-son. Ky-ri e e- lé- i-son.

B

I  (X) XIV-XVI. s.

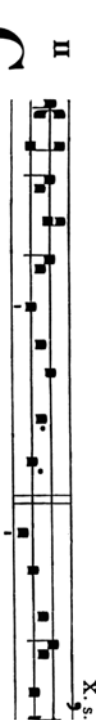
K Y-ri e * e- lé- i-son. bis Chri-ste

e- lé- i-son. bis Ky-ri e e- lé- i-son.

Ky-ri e e- lé- i-son.

II

G

 X. s.

Ló-ri a in excélsis De- o. Et in terra pax

homí-ni-bus bonae vo-luntá-tis. Laudá-mus te. Be-ne-
dí-cimus te. Ado-rá-mus te. Glo-ri-fi-cá-mus te.

Grá-ti-as á-gimus ti-bi propter magnam gló-ri-am tu-am.

Dó-mi-ne De-us, Rex cae-lé-stis, De-us Pa-ter omní-pot-
ens. Dó-mi-ne Fi-li u-ni-gé-ni-te Je-su Chri-ste.

Dó-mi-ne De-us, Agnus De-i, Fi-li-us Pa-tris. Qui
tol-lis pec-cá-ta mun-di, mi-se-ré-re no-bis. Qui tol-lis
pec-cá-ta mun-di, sus-ci-pe de-pre-ca-ti-ó-nem nostram. Qui

In natiuit. dñi.



Uer natus ē no bis
et fi lius dat⁹ ē no
biscuius imperi um

sup humerum e ius ⁊ vocabit no
mē e ius magni ꝑ filij an gelus

Is. 9,6; Ps. 97

P U - er na - - - tus est no - - - - bis,
et fi - - li - us da - tus est no - - bis:
cu - ius im - pe - - - ri - um su - per hu - - - me - rum
e - - - - - ius: et vo - ca - - - bi - tur
no - men e - - - - - ius, ma - gni con - si - lii
An - - - - ge - lus.